

Pediatric Whole Body Phantom "PBU-70"



The New Kyoto Kagaku Pediatric Whole Body Phantom modeled after a 4-year-old child of 42" (105 cm) tall. This phantom is a life-size, full body anthropomorphic phantom with a state-of-the-art synthetic skeleton, lungs, liver, mediastinum and kidneys embedded in KYOTOKAGAKU original soft tissue substitute.

Training skills

- Plain X-ray photography and basic CT scanning.
- Basic patient positioning for X-ray and CT.

Features

Movable joints allow basic positioning for plain X-ray. Training and research applications can be enriched by disassembling the phantom into 10 individual parts (head, limbs and trunk).

Main joints have life-like articulation, allowing various positioning for training.

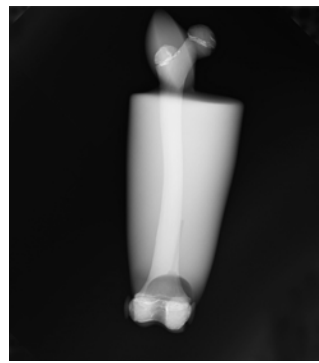
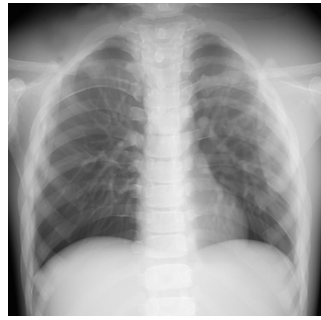
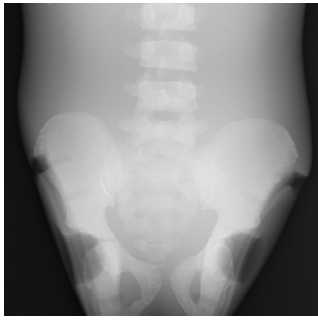
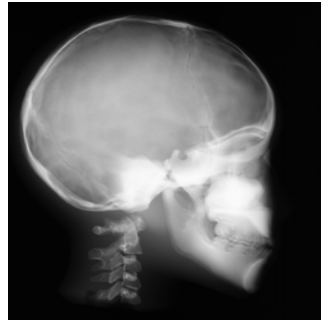
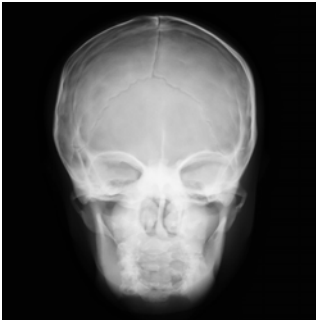
The phantom has no metal parts or liquid structures.

Anatomy

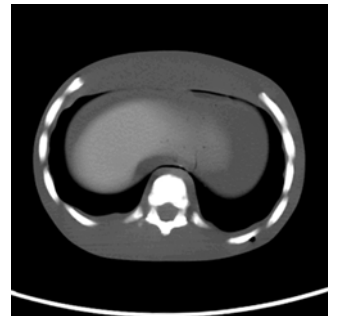
Life size synthetic skeleton
 Hands and feet with bone trabeculae
 Lungs with pulmonary vessels
 Mediastinal space
 Liver
 Kidneys



Plain X-ray



CT

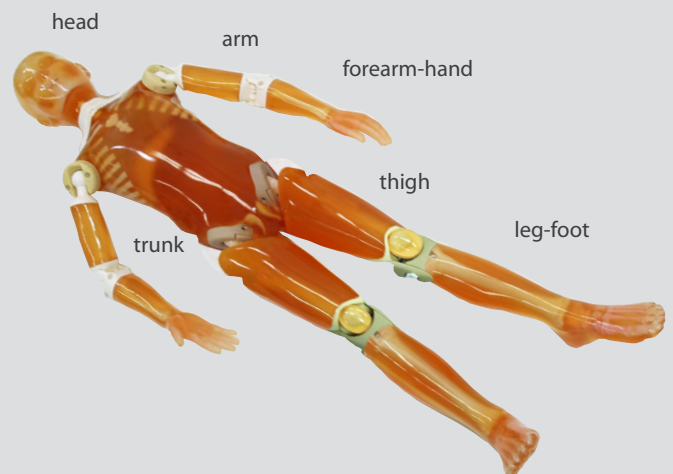


1 Whole Body Phantom PBU-70
(separable into 10 parts)
Synthetic bones,
embedded organs are listed on page 1.
phantom size: approx. 105 cm height
phantom weight: approx. 20 kg

PBU-70 phantom can be disassembled into 10 parts.

Set Includes

- 1 head
- 2 trunk
- 3 right arm
- 4 right forearm-hand
- 5 left arm
- 6 left forearm-hand
- 7 right thigh
- 8 right leg-foot
- 9 left thigh
- 10 left leg-foot



Specifications are subject to change.